

# 2010

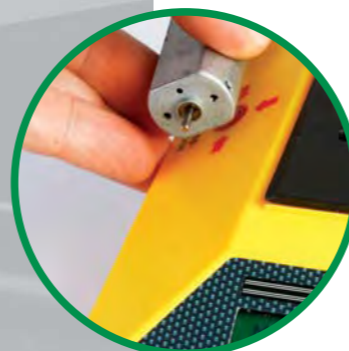


**IBB AUTO RACING, S.L.**  
La Masia, 28  
08711 Odena (Barcelona) - Spain  
Tel. +34 93 803 08 80  
Fax +34 93 805 50 57

e-mail: [info@ibbautoracing.com](mailto:info@ibbautoracing.com)  
web: [www.ibbautoracing.com](http://www.ibbautoracing.com)

# TESTING BENCH

- Complete testing unit for Slot cars.
- Valid for any scale: 1/32, 1/28 and 1/24.
- All need sensors for privateers or professional racers: Weight balance, RPM, Magnet GAUSS, Car magnet attraction, Torque, Volts and Amperes.
- Automatic motor or car brake in with adjustable Voltaje and time in 6 steps.
- Backlight LCD for low ambience light conditions as enduracne racing.
- Allow testing all kind of motors up to 3 amp.
- Double encoder option, for 2mm and 1.5mm motor diameter axles.
- Motor mount for all available Slot car motors, S-can, Short-Can, Long-Can, Flat-Can, RX-Can, RS-Can.
- Data exit to PC with USB wiring and trought DS Wireless system.
- Optional Software for motor and car checking available soon.
- 24V and 8 Amp power unit included.
- Transport aluminium protection box included.



## TECHNICAL DATA

Ref. DS-4101

### TESTING BENCH WIRELESS PACK

## CHECKING TOOLS

- Motor torque measurement.
  - Permanent display of Voltage, Amperage, RPM showed on LCD.
  - Once the test is finished, Testing bench shows motor torque in gr\*cm.
- Motor RPM at fix voltage.
  - Automatic or personalized timing measure.
  - Permanent display of Voltage, Amperage, RPM showed on LCD.
  - Once the test is finished, Testing bench shows absolute maximum RPM.
- Tyre RPM at fix voltage.
  - Automatic or personalized timing measure.
  - Permanent display of Voltage, Amperage, Tyre RPM showed on LCD.
  - Allow gear-pinion ratio.
  - Once the test is finished, Testing bench shows absolute maximum RPM on tyre as well as motor RPM.
- Car weight without magnetic attraction
  - Front and rear weight of the car
  - Overall weight of the car.
- Magnetic attraction
  - Front and rear car magnetic attraction.
  - Overall magnet traction of the car.
- Motor or magnet Gauss power
  - Instant magnet power.
  - Maximum magnet power in 2 seconds.
  - Absolute maximum magnet power.
- Gauss and weight cell calibration
- Motor brake in in 6 steps.
  - Allow to program each step in time and voltage
  - Voltage program from 0 to 18volts.
  - Time program from 0 to 99minutes.

